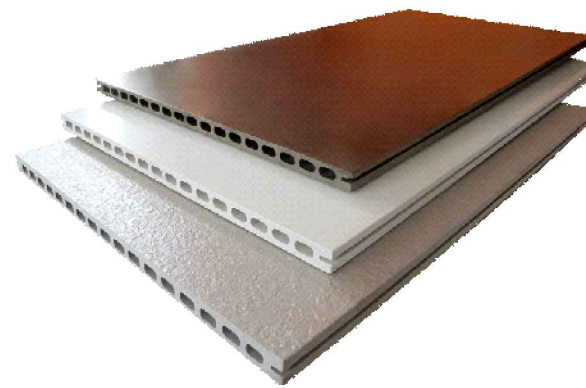


frontek
cerámica tecnológica en fachadas



CURTAIN WALL INSTALLATION HORIZONTAL CONFIGURATION

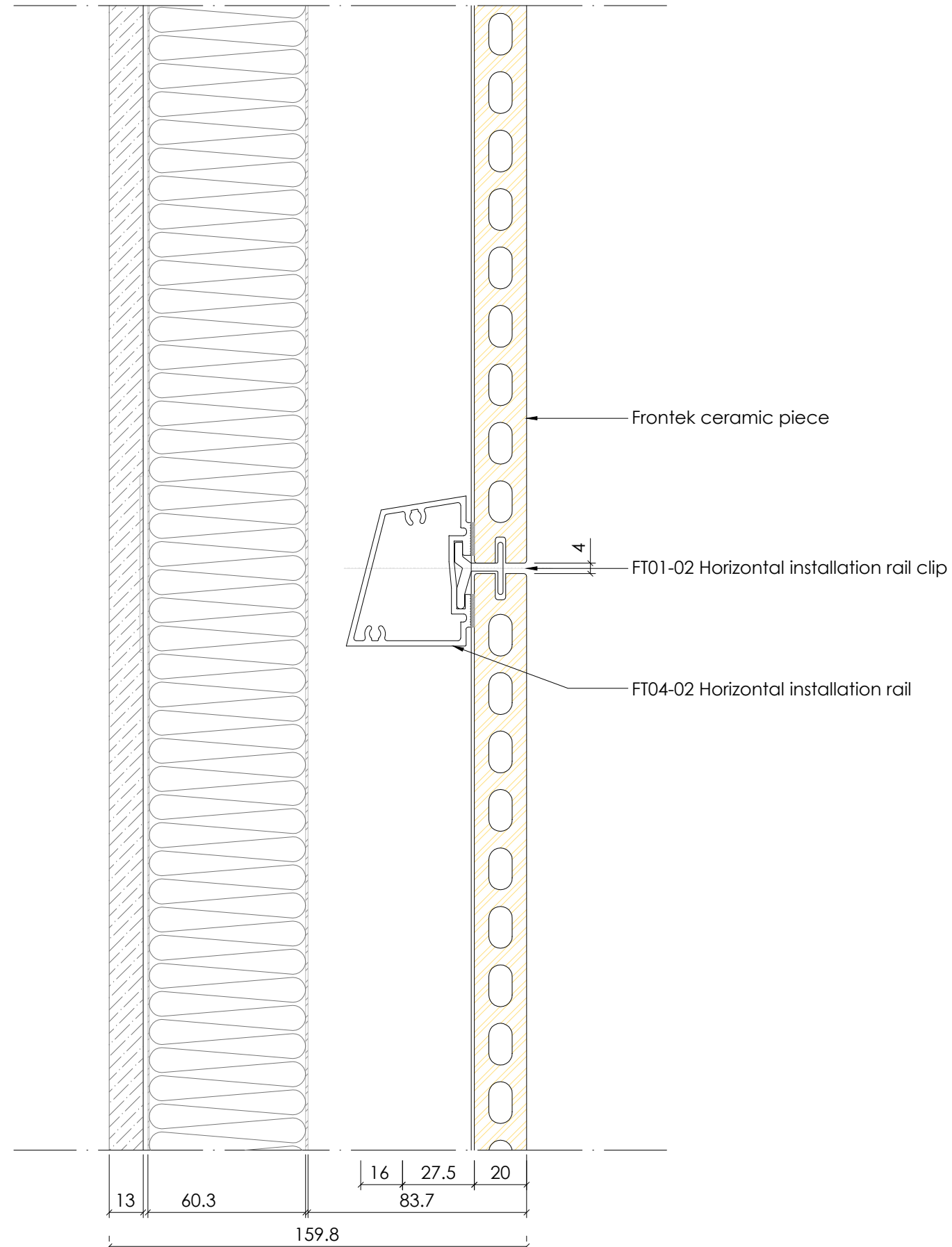
FRONTEK AUSTRALIA PTY LTD.

www.frontek.com.au

+61 2 9316 6818

Horizontal Configuration

CURTAIN WALL INSTALLATION



VERTICAL SECTION.

FOR INFORMATION

COPYRIGHT

These designs, details and/or specifications and the Copyright Therein, remain the property of

Frontek Australia.

and shall not be divulged in any form whatsoever without written permission of

Frontek Australia.

All fixings sizes and types to be engineered by constructors

DRAWING DESCRIPTION
VERTICAL SECTION

FACADE TYPE
CURTAIN WALL INSTALLATION

FRONTEK SYSTEM
HORIZONTAL CONFIGURATION

DRAWN BY
NURIA CASTRO

FIRST DRAWN DATE 14/05/2018

REVIEWED BY
-

SCALE 1/20 SIZE A3

DRAWING NO. D001

frontek
cerámica tecnológica en fachadas

FRONTEK AUSTRALIA PTY LTD.
www.frontek.com.au
+61 2 9316 6818

Horizontal Configuration

CURTAIN WALL INSTALLATION

FOR INFORMATION

COPYRIGHT

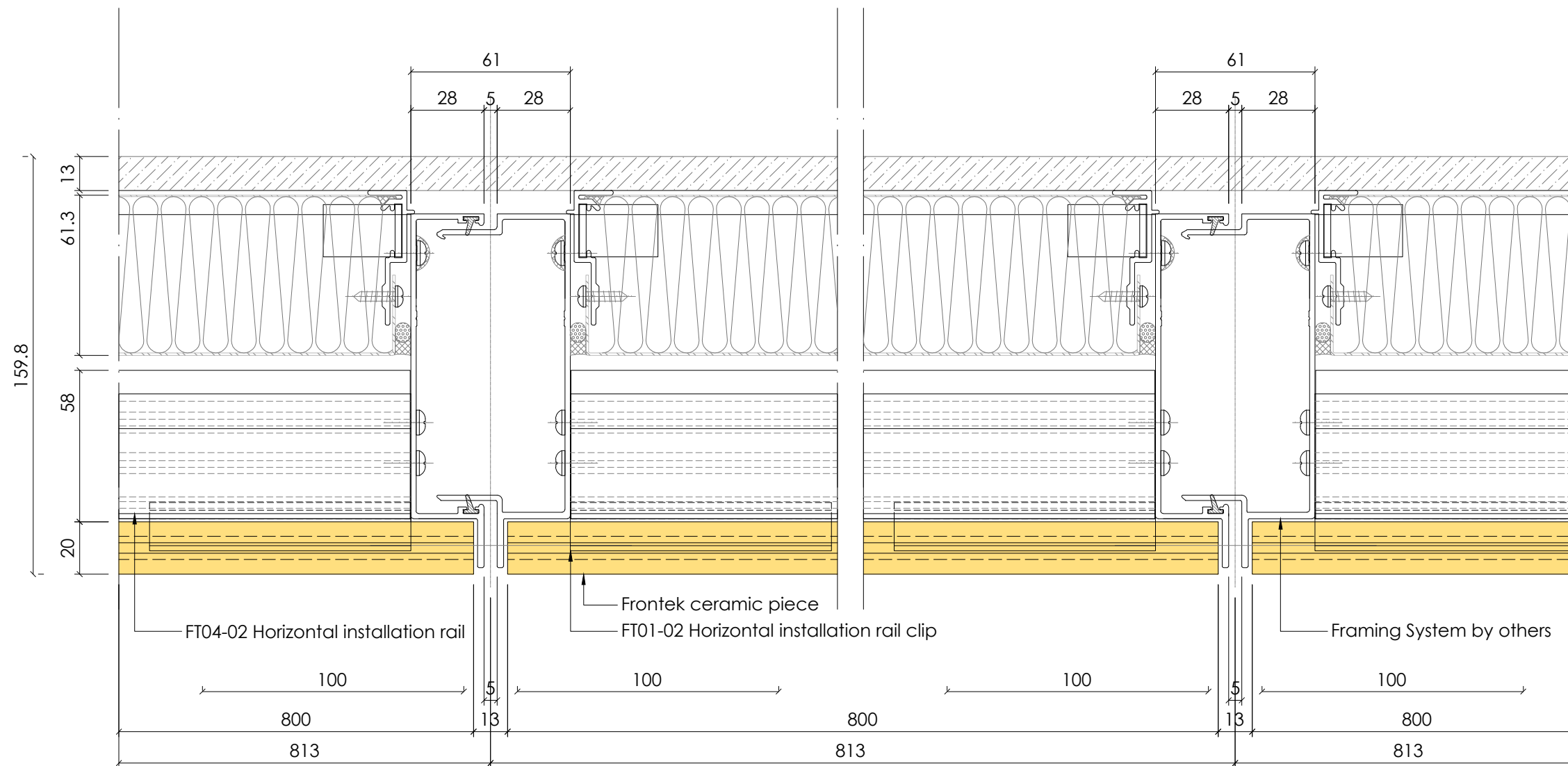
These designs, details and/or specifications and the Copyright Therein, remain the property of

Frontek Australia.

and shall not be divulged in any form whatsoever without written permission of

Frontek Australia.

All fixings sizes and types to be engineered by constructors



HORIZONTAL SECTION.

DRAWING DESCRIPTION
HORIZONTAL SECTION

FACADE TYPE
CURTAIN WALL INSTALLATION

FRONTEK SYSTEM
HORIZONTAL CONFIGURATION

DRAWN BY
NURIA CASTRO

FIRST DRAWN DATE 14/05/2018

REVIEWED BY
-

SCALE 1/20 SIZE A3

DRAWING NO. D002

frontek
cerámica tecnológica en fachadas

FRONTEK AUSTRALIA PTY LTD.
www.frontek.com.au
+61 2 9316 6818